

TAMING THE URBAN JUNGLE
Your Delineator & Bollard Resource

Gorilla Post Base Plate Installation Instructions – Magnetic Posts & Bollards

Congratulations on your recent purchase of the Gorilla Post System. The system components include the metal mounting base plate, epoxy to permanently attach the plate to the concrete or asphalt subsurface, the post or bollard and, if the standard magnetic base, a removal tool.

GPPLATEA Base Plate Installation onto Asphalt or Concrete

1) Use 60 Grit sandpaper to lightly sand the back side (the side without any writing) of the plate. (image 1-A)

2) Place a 1" x 1" piece of strong, sticky tape on the back side of plate so that the large center hole is completely covered. (image 1-B)

3) Position the plate on a flat, even surface where you will want the plate permanently attached. Use a marking pen to mark the 3 smaller holes in the plate. These marks will indicate where to use a roto-hammer drill with 1/2" diameter bit to create holes that are 2" deep. Move the plate out of the way and drill the 3 holes. Make sure each hole is deep enough for the lag sleeve to be inserted so is completely below the surface. (image 1-C)

4) Read the instructions that ships with the epoxy and follow those directions. Prepare epoxy. Place epoxy into each 2" deep hole so is half full of epoxy. (image 1-D)

5) Press a lag sleeve into each hole making sure the sleeve is just below the surface of the asphalt. Add a bit of epoxy in the lag sleeve. (image 1-E)

6) Place about 1 ounce of epoxy onto the backside of the plate while being careful to avoid the center hole. (image 1-F)

7) Carefully place the plate so the 3 smaller holes in the plate align with the 3 holes that contain the lag sleeves. (image 1-G)

8) Use a screwdriver to insert the stainless steel screws through the holes in the plate into the lag sleeves. (image 1-H)

9) The heads of the screws should not be sticking above the surface of the plate or this will prevent the magnetic base of the post or bollard from properly coupling onto the plate. Wait at least 24 hours before placing a post or bollard on a plate. Refer to directions that accompany the epoxy for the suggested time to wait. (image 1-I)



image 1-A

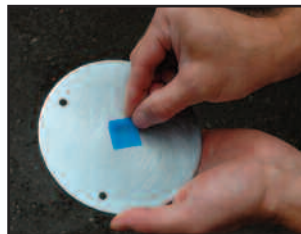


image 1-B



image 1-C



image 1-D



image 1-E



image 1-F



image 1-G



image 1-H



image 1-I



image 2-A



image 2-B



image 2-C



image 2-D

GPPLATE Base Plate Installation onto only concrete

1) Use 60 Grit sandpaper to lightly sand the back side (the side without any writing) of the plate. (image 2-A)

2) Place a 1" x 1" piece of strong, sticky tape on the back side of plate so that the large center hole is completely covered. (image 2-B) Prepare epoxy.

3) Place about 1 ounce of epoxy onto the backside of the plate while being careful to avoid the center hole. (image 2-C)

4) Carefully place the plate on a flat, even surface into position. Wait at least 24 hours before placing a post or bollard on a plate. Refer to directions that accompany the epoxy for the suggested time to wait. (image 2-D)

Preparing Epoxy for Installing the Base Plate: The Epoxy Disposable Unit option

One GPEPOXY is suitable to adhere 1 GPPLATEA mounting plate to asphalt or 1 GPPLATE mounting plate to concrete.

1) Using the Epoxy Disposable Unit. The epoxy disposable unit includes the disposable cartridge and disposable mixing/spreading stick. The epoxy system is a disposable unit that will install 1 plate. Follow manufacturer's instructions which may differ from the following suggestions and illustrations. (image 3-A)

2) Remove the tab that blocks the plunger from moving and set aside. The tab also functions as a cap. (image 3-B)



image 3-A



image 3-B



image 3-C



image 3-D



image 3-E

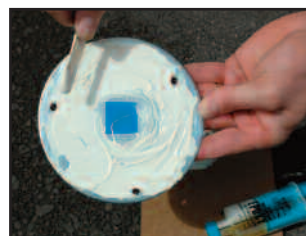


image 3-F

Continued

- 3) Cut away the end of the cartridge. (image 3-C)
- 4) Push the plunger into the cartridge. Use scrap cardboard or the backside of the base plate to hold the epoxy as you prepare to mix the epoxy. (image 3-D)
- 5) Stir the epoxy for 2 minutes in concentric circles taking care not to spread the epoxy too far. The epoxy is ready to be used. (image 3-E)
- 6) Use the mixing stick to apply the epoxy. (image 3-F)

Preparing Epoxy for Installing the Base Plate: The Epoxy System Kit option

Each cartridge will affix approximately 12 GPPLATEA mounting plates to asphalt or 12 GPPLATE mounting plates to concrete.

- 1) Using the Epoxy System Kit. The kit includes the gun with piston, disposable epoxy cartridge and disposable nozzle. The epoxy system kit will install around 12 plates and the reusable gun can be used with replacement cartridges to put down additional plates. Follow manufacturer's instructions which may change and differ from the following suggestions and illustrations. (image 4-A)
- 2) Pull the pressure plunger outwards. (image 4-B)
- 3) Make sure the pressure plunger is fully extended. (image 4-C)
- 4) Rotate the piston and lift it out of the gun. (image 4-D)
- 5) Insert the disposable cartridge in the piston. (image 4-E)
- 6) Place the piston with the cartridge back into the gun by rotating the piston. (image 4-F)
- 7) Remove the cap from the cartridge. (image 4-G)
- 8) Install the disposable nozzle onto the cartridge. (image 4-H)
- 9) Pull the gun's trigger until the pressure plunger presses against the cartridge causing epoxy to flow down the nozzle. Discard the first 2 squirts of epoxy. The epoxy is ready to be used. The epoxy mixes as it flows down the nozzle. The epoxy will set in the nozzle so if the cartridge is not completely used, be sure to order spare nozzles for subsequent use of a single cartridge. Do not discard the piston when you discard the cartridge. Do discard the nozzle. (image 4-I)



image 4-A



image 4-B



image 4-C



image 4-D



image 4-E



image 4-F



image 4-G



image 4-H



image 4-I

After testing over 100 formulations, there are only two epoxy options approved for installing the GPPlate and GPPlateA: Hilti HIT-RE 500 V3 and SuperGlue Metal Epoxy #15212

Installation Fails:



Hex or Wrong Bolts



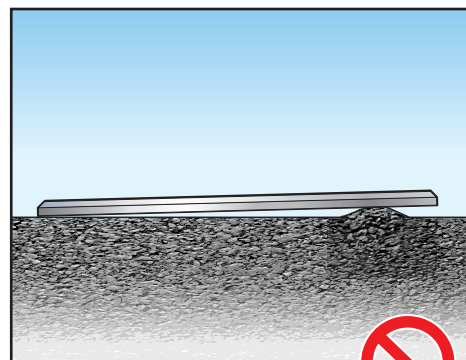
Epoxy in Center Hole



No or Wrong Epoxy



Debris on Base Plate



Uneven Surface



Uneven Surface

Please use proper safety precautions and equipment including protective gloves and eyewear during installation.



1.800.292.7275 • orders@parkingzone.com • GorillaPost.com



14208 NW Third Court • Suite 200 • Vancouver, WA 98685-5759